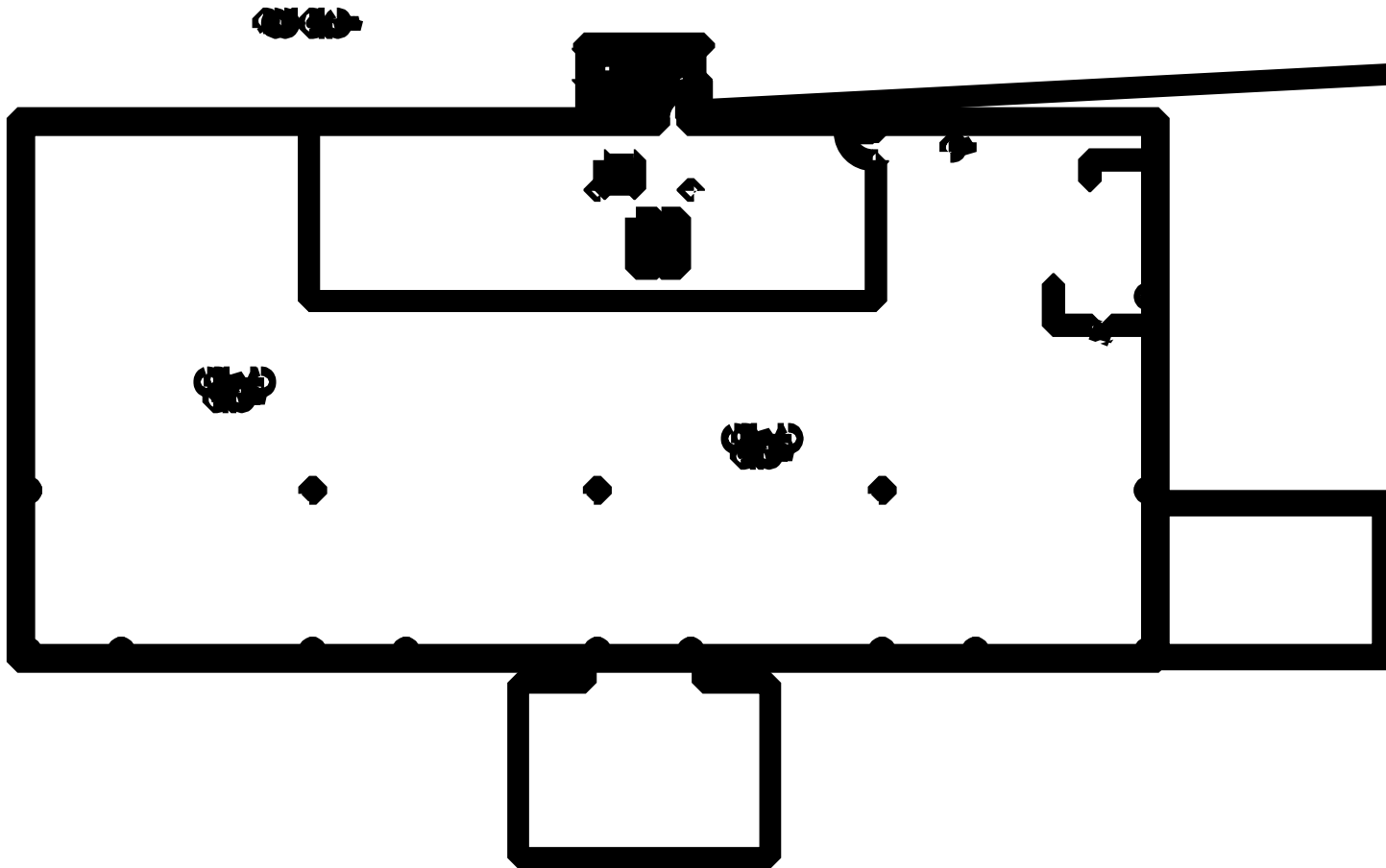


CALL 911



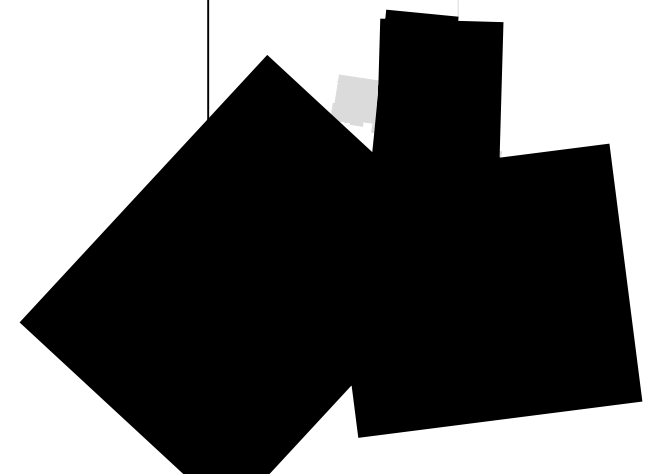
FIRE ALARM WILL SOUND AS
CHIRPING ELECTRICAL HORN,
STROBE LIGHT WILL FLASH.

PERSONS WITH DISABILITIES

CALL 911, REPORT
YOUR LOCATION,
PROCEED TO THE
NEAREST EXIT OR EXIT
STAIRWELL AND
AWAIT ASSISTANCE.




EVACUATION SITE



SYMBOL LEGEND

 EMERGENCY EGRESS PATH

 FIRE EXTINGUISHER

 YOU ARE HERE