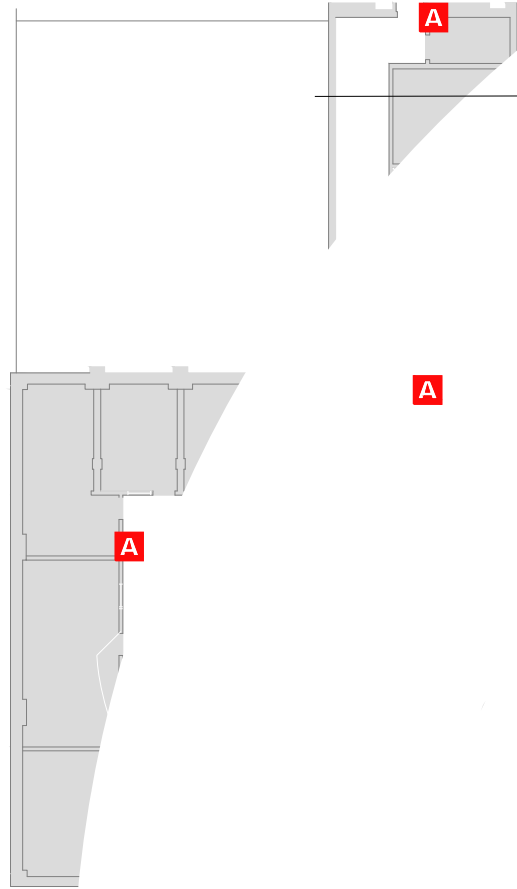


EVACUATION PLAN

SIGNERS' HALL, FS402

EIELSON BUILDING



FIRE
POLICE
MEDICAL

IN CASE OF FIRE, PULL
FIRE ALARM, USE EXIT
STAIRS, CLOSE ALL
WINDOWS AND DOORS,
DO NOT USE ELEVATOR

